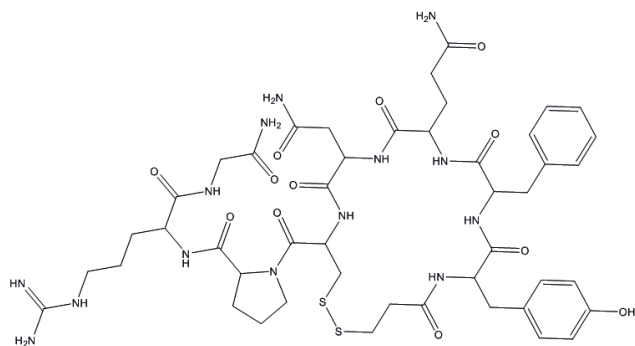


For Research Use Only. NOT for Use in Diagnostic Procedures.

# Extraction of Desmopressin from Serum Using EVOLUTE® EXPRESS WCX Prior to LC-MS/MS Analysis



**Figure 1.** Structure of Desmopressin (MWt 1069.2).

## Introduction

This application note describes a solid phase extraction (SPE) protocol for the extraction of the peptide desmopressin from human serum prior to LC-MS/MS analysis.

Desmopressin is an antidiuretic hormone and a synthetic vasopressin analogue. Desmopressin is clinically used to treat bedwetting (nocturnal enuresis), diabetes insipidus and may also be used for clotting disorders.

The method described in this application achieves high reproducible extraction recoveries of desmopressin peptide from serum while minimizing co-extractable material in the form of proteins, lipids and phospholipids. Extraction from serum was performed using EVOLUTE® EXPRESS WCX 96-well plates.

EVOLUTE® EXPRESS SPE products provide robust, efficient, high throughput automatable extraction solutions.



## Analytes

Desmopressin

## Sample Preparation Procedure

### Format

EVOLUTE® EXPRESS WCX 30 mg plate, part number 602-0030-PX01

### Sample Pre-treatment

Dilute serum (200 µL) with 10 mM ammonium acetate pH 6 (aq) (200 µL)

## Solid Phase Extraction

### Condition

Condition each well with methanol (1 mL)

### Equilibration

Equilibrate each well with 10 mM ammonium acetate pH 6 (aq) (1 mL)

### Sample Loading

Load 400 µL of pre-treated serum into each well

### Wash 1

Elute interferences with 10 mM ammonium acetate pH 6 (aq) (1 mL)

### Wash 2

Elute interferences with methanol (1 mL)

### Elution

Elute analytes with 2% formic acid in 70/30 (v/v) methanol/H<sub>2</sub>O (200 µL)

### Post Elution

Evaporate to dryness at 40 °C in a stream of air or nitrogen using a Biotage® SPE Dry 96

### Reconstitution

Reconstitute the extract with 0.1% Formic acid in H<sub>2</sub>O/ MeCN (50/50, v/v, 200 µL)

## UHPLC Conditions

### Instrument

Waters ACQUITY I-Class

### Column

ACE EXCEL 1.7  $\mu$  C18-amide column (100 x 2.1 mm id)

### Mobile Phase

**A:** 0.1% Formic acid (aq)

**B:** 0.1% Formic acid in acetonitrile (MeCN)

### Flow Rate

Flow rate: 0.3 mL/min

**Table 1:** Gradient Conditions.

Time	%A	%B	Curve
0	90	10	1
4.0	5	95	6
5.0	90	10	11
5.5	90	10	11

Curve 6: Linear Gradient.

### Injection Volume

2  $\mu$ L

### Sample Temperature

20 °C

### Column Temperature

40 °C

## Mass Spectrometry Conditions

### Instrument

Xevo TQ-S triple quadrupole mass spectrometer equipped with an electrospray interface for mass analysis.

### Desolvation Temperature

500 °C

### Ion Source Temperature

150 °C

### Collision Cell Pressure

3.7 e<sup>-3</sup> mbar

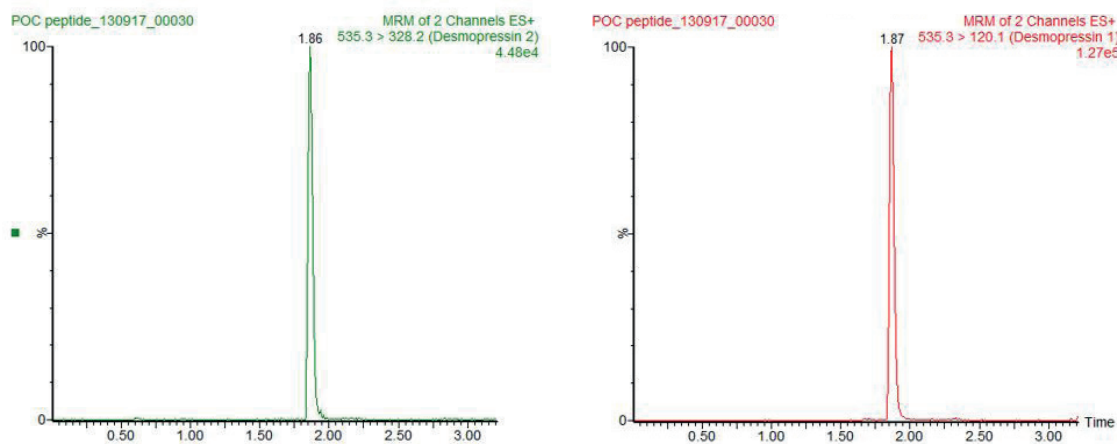
Positive ions were acquired in the multiple reaction monitoring (MRM) mode for the [M+2H]<sup>2+</sup> doubly charged ion:

**Table 2.** MRM Conditions.

Compound	MRM Transition	Cone Voltage (V)	Collision Energy (eV)
Desmopressin (Qual)	535.3 > 120.1	30	20
Desmopressin (Quant)	535.3 > 328.2	30	25

## Results

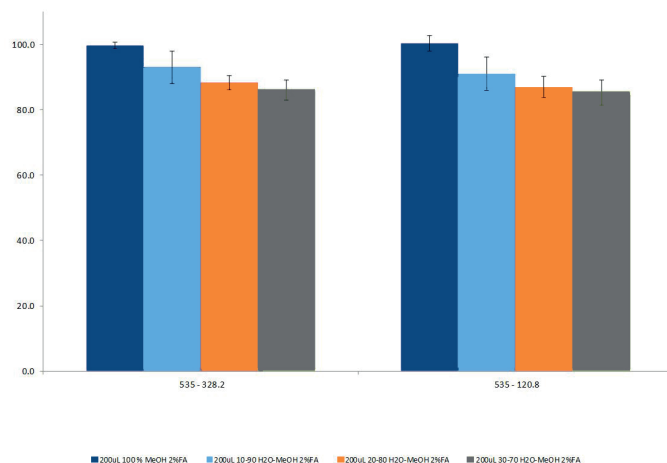
Good retention and chromatographic peak shape was obtained using the C18-amide column. Figure 2. shows signal intensity and peak shape attained from serum spiked at 5 ng/mL.



**Figure 2.** Chromatography obtained from serum spiked at 5 ng/mL.

## Recovery

Serum was spiked at various concentrations from 0.2–200 ng/mL for recovery determination. High reproducible recoveries >80 % with corresponding RSDs <10 % were demonstrated. Figure 3. shows the recovery profile using 2% formic acid in various combinations of MeOH/H<sub>2</sub>O from 100% methanol to MeOH/H<sub>2</sub>O (70/30, v/v). Slightly lower recoveries were observed using the 70/30 (v/v) combination but significant improvements in extract cleanliness (phospholipid removal) were observed under these elution conditions.

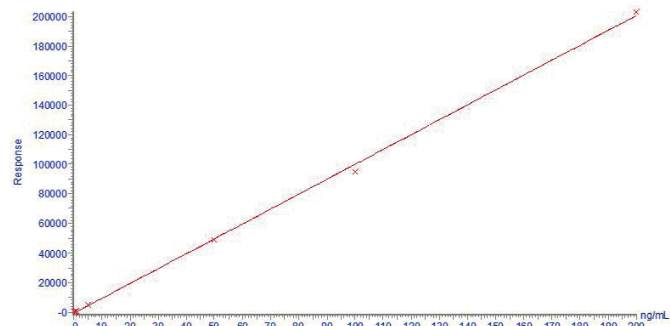


**Figure 3.** Spiked serum recovery profile for the EVOLUTE® EXPRESS WCX SPE protocol using various % aqueous elution solvents.

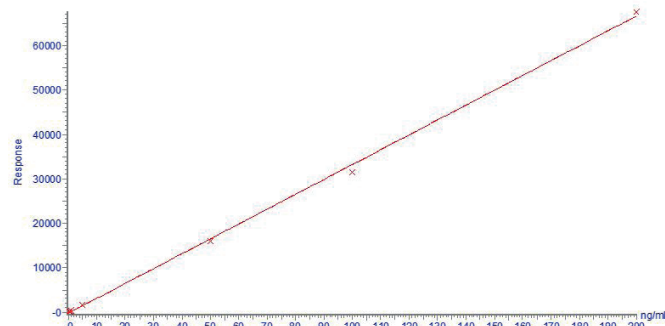
## Calibration Curves

Calibration curves were generated using stripped serum spiked at concentrations from 0.2–200 ng/mL. Good linearity, coefficients of determination ( $r^2 > 0.99$ ) and sensitivity (nominal LOQ 0.2 ng/mL) were obtained. Stripped serum matrix demonstrated low endogenous levels which contributed to a slight intercept on the calibration curves.

Compound name: Desmopressin 120.1  
Correlation coefficient:  $r = 0.999574$ ,  $r^2 = 0.999148$   
Calibration curve:  $1005.93 \times x + -656.677$   
Response type: External Std. Area  
Curve type: Linear, Origin: Include, Weighting: Null, Axis trans: None



Compound name: Desmopressin 328.2  
Correlation coefficient:  $r = 0.999482$ ,  $r^2 = 0.998965$   
Calibration curve:  $334.144 \times x + -236.374$   
Response type: External Std. Area  
Curve type: Linear, Origin: Include, Weighting: Null, Axis trans: None

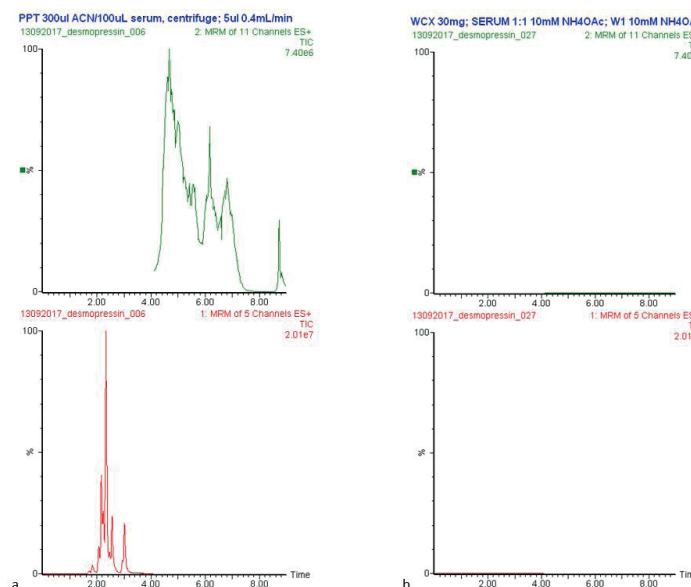


**Figure 4.** Serum quantifier ion calibration curves spiked from 0.2–200 ng/mL.

## Extract Cleanliness

### Phospholipid Removal

Phospholipids were investigated to provide an indication of extract cleanliness. The most abundant phospholipids (previously selected from full scan, SIR and precursor ion scanning experiments) using MRM transitions monitoring the common 184 product ion. Figure 5 compares the phospholipid content of 100 µL of protein precipitated serum (a) with the final extract obtained using this EVOLUTE® EXPRESS WCX protocol (200 µL of matrix) (b).



**Figure 5.** Phospholipid MRM TICs for protein precipitated serum (a) and final serum extract (b) showing efficient removal of phospholipids during the SPE procedure.

## Additional Notes

### Buffer Preparation

1. 10 mM ammonium acetate aq at pH 6: Weigh 0.7708 g of ammonium acetate and dissolve in deionised water. Dilute and make up to 1 L in deionised water, acidify to pH 6 with acetic acid.
2. 2% formic acid in H<sub>2</sub>O /methanol (30/70, v/v). Measure 28 mL of water and add 70 mL of methanol. Add 2 mL of formic acid. Mix.
3. 0.1% formic acid in H<sub>2</sub>O/ MeCN (50/50, v/v). Measure 49.9 mL of water; add 100 µL of formic acid and add 50 mL of MeCN.

### Mobile Phase Considerations and Ionization

4. Ionization is performed in +ve ion mode with desmopressin demonstrating precursor ion at 535.3 m/z, corresponding to the [M + 2H]<sup>2+</sup> ion.
5. Acidic mobile phase additives were used to facilitate protonation in positive ion mode.
6. Acetonitrile was selected for the organic eluent as a polar aprotic option for ionization. Acetonitrile provided sharper peaks and as a result better signal to noise ratios compared to methanol.

### SPE Considerations

1. pH control using a pH 6 buffer for sorbent conditioning and sample pre-treatment allowed ionization of both the weak cation exchange SPE sorbent (-ve charge) and the analyte (+ve charge) for optimum analyte retention.
2. Due to high analyte polarity, interference elution (wash) steps were pH controlled and kept highly aqueous to remove any proteins or salts while maintaining analyte ionisation for optimum retention. The second organic wash step is used to disrupt hydrophobic interactions of any non-ionised species (lipids etc).
3. Final elution conditions were optimized to high organic conditions to ensure solubility of the analyte and break hydrophobic retention. Acidic solvent pH conditions eliminate the charge on the sorbent when using weak cation exchange SPE. Elution with 2% formic acid in H<sub>2</sub>O/ACN (30/70, v/v) also prevents elution of any remaining phospholipids, ensuring a clean extract.
4. Minimum elution volumes were optimized at 200 µL; but this will depend on exact solvent selection.
5. A reconstitution solvent of 0.1% Formic acid in H<sub>2</sub>O/ MeCN (50/50, v/v) was selected to avoid analyte solubility issues which then required a low injection volume of 2 µL.
6. EVOLUTE® EXPRESS ABN also provided good recoveries and endogenous matrix removal. However, overall performance was better using the optimized elution combination with WCX sorbent.

## Ordering Information

Part Number	Description	Quantity
<b>602-0030-PX01</b>	EVOLUTE® EXPRESS WCX 10 mg Fixed Well Plate	1
<b>PPM-96</b>	Biotage® PRESSURE+ 96 Positive Pressure Manifold	1
<b>121-5203</b>	Collection plate, 2 mL, square	50
<b>121-5204</b>	Piercable sealing cap	
<b>SD-9600-DHS-EU</b>	Biotage® SPE Dry 96 Sample Evaporator 220/240V	1
<b>SD-9600-DHS-NA</b>	Biotage® SPE Dry 96 Sample Evaporator 100/120V	1

#### EUROPE

Main Office: +46 18 565900  
Toll Free: +800 18 565710  
Fax: +46 18 591922  
Order Tel: +46 18 565710  
Order Fax: +46 18 565705  
order@biotage.com  
Support Tel: +46 18 56 59 11  
Support Fax: + 46 18 56 57 11  
eu-1-pointsupport@biotage.com

#### NORTH & LATIN AMERICA

Main Office: +1 704 654 4900  
Toll Free: +1 800 446 4752  
Fax: +1 704 654 4917  
Order Tel: +1 704 654 4900  
Order Fax: +1 434 296 8217  
ordermailbox@biotage.com  
Support Tel: +1 800 446 4752  
Outside US: +1 704 654 4900  
us-1-pointsupport@biotage.com

#### JAPAN

Tel: +81 3 5627 3123  
Fax: +81 3 5627 3121  
jp\_order@biotage.com  
jp-1-pointsupport@biotage.com

#### CHINA

Tel: +86 21 68162810  
Fax: +86 21 68162829  
cn\_order@biotage.com  
cn-1-pointsupport@biotage.com

#### KOREA

Tel: + 82 31 706 8500  
Fax: + 82 31 706 8510  
korea\_info@biotage.com  
kr-1-pointsupport@biotage.com

Distributors in other regions are listed on [www.biotage.com](http://www.biotage.com)

#### Part Number: AN887.V.1

© 2017 Biotage. All rights reserved. No material may be reproduced or published without the written permission of Biotage. Information in this document is subject to change without notice and does not represent any commitment from Biotage. E&OE. A list of all trademarks owned by Biotage AB is available at [www.biotage.com/legal](http://www.biotage.com/legal). Other product and company names mentioned herein may be trademarks or registered trademarks and/or service marks of their respective owners, and are used only for explanation and to the owners' benefit, without intent to infringe. **FOR RESEARCH USE ONLY. NOT FOR USE IN DIAGNOSTIC PROCEDURES.**