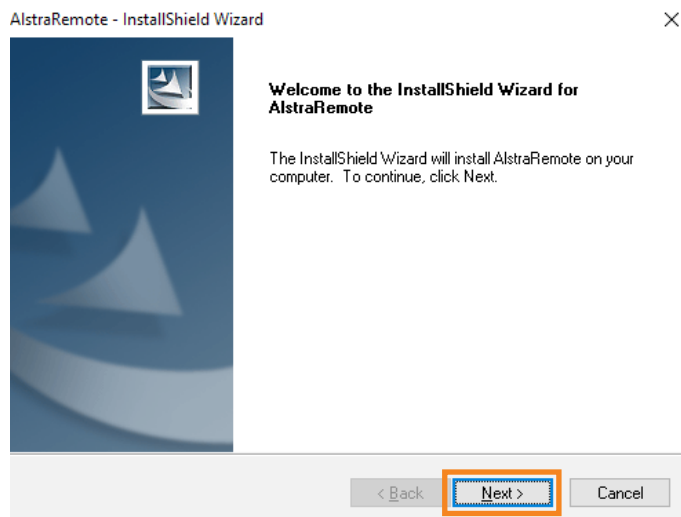


Alstra™ Remote

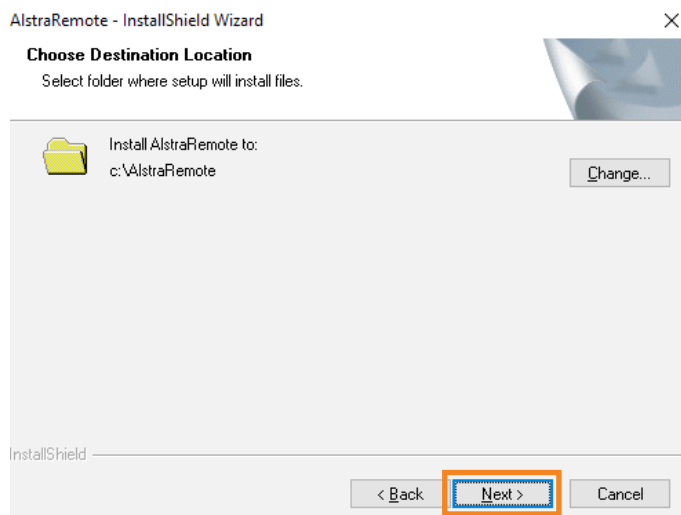
Installation Guide



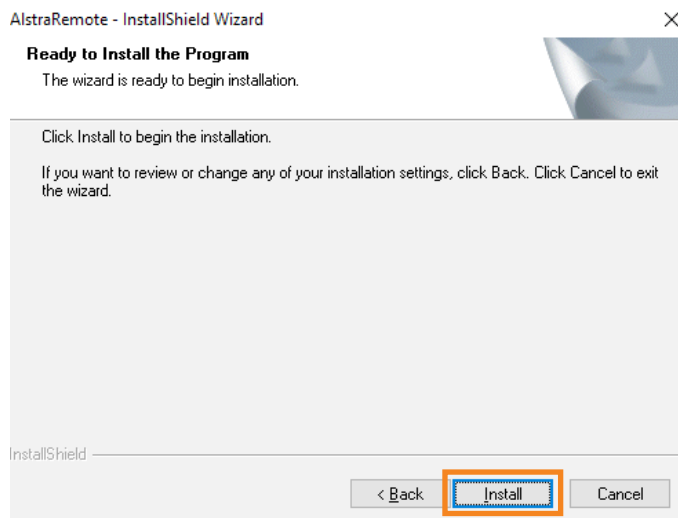
1. Download the file AlstraRemoteInstall.exe from www.biotage.com.
2. Double click the file to start the installation program. The InstallShield Wizard that will guide you through the installation will start. Press Next to continue.



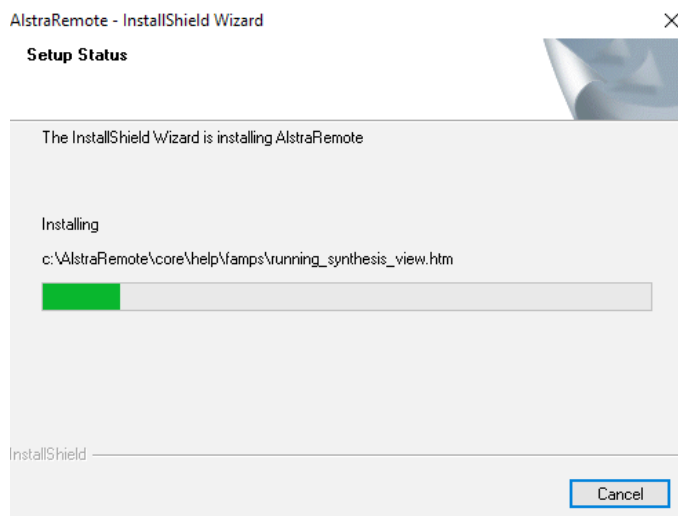
3. If you want to change the location of the installation folder, press Change and choose a folder or create a new folder and/or press Next.



4. Press Install to begin the installation.

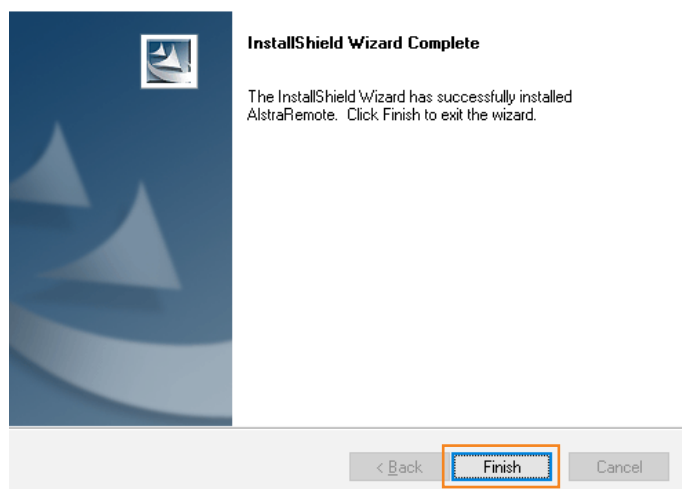


5. The installation will start and a progress bar will show you how far the installation has progressed.



6. Once the installation is completed, press the Finish button.

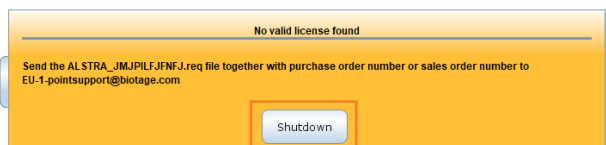
AlstraRemote - InstallShield Wizard



7. Now go to the installation folder and double click on the AlstraRemote application. The Biotage Alstra™ Remote software will start.

Name	Date modified	Type	Size
core	26-Sep-18 2:53 PM	File folder	
AlstraRemote	18-Sep-18 10:54 AM	Application	172 KB

8. The first time you start Alstra™ Remote software, you will get a message “No valid license found” requesting you to send a file (.req file) to EU-1-pointsupport@biotage.com. Press Shutdown and go back to the installation folder.



9. Click on the newly created USB folder.

Name	Date modified	Type	Size
core	26-Sep-18 2:57 PM	File folder	
usb	26-Sep-18 2:56 PM	File folder	
AlstraRemote	18-Sep-18 10:54 AM	Application	172 KB

10. The .req file is created in this USB folder. The .req file will differ in name to the example shown. Copy this .req file in the USB directory and send it together with your purchase order or sales order number to EU-1-pointsupport@biotage.com or your local 1-Point Support. You will receive a returning e-mail from Biotage with a license key file (.ILF file) attached to it.

Name	Date modified	Type	Size
ALSTRA_IUJIPFHIFK.req	26-Sep-18 2:56 PM	REQ File	1 KB

11. Copy and paste this file (.ILF file) into the same USB folder and then double click on the application AlstraRemote. The program will start and let you use the Alstra™ Remote software. Enjoy!

Name	Date modified	Type	Size
ALSTRA_IUJIPFHIFK.ILF	26-Sep-18 3:32 PM	ILF File	1 KB
ALSTRA_IUJIPFHIFK.req	26-Sep-18 2:56 PM	REQ File	1 KB

12. When you create a new peptide synthesis setup or generate a new calculation sheet, they will be exported to the installation folder in the “exported-syntheses” and “peptidereports” folders. The synthesis setup can be copied and imported to a Biotage® Initiator+ Alstra™ microwave peptide synthesizer.

Name	Date modified	Type	Size
exported_syntheses	26-Sep-18 3:41 PM	File folder	
peptidereports	26-Sep-18 3:40 PM	File folder	
ALSTRA_IUJIPFHIFK.ILF	26-Sep-18 3:32 PM	ILF File	1 KB
ALSTRA_IUJIPFHIFK.req	26-Sep-18 2:56 PM	REQ File	1 KB

EUROPE

Main Office: +46 18 565900
Toll Free: +800 18 565710
Fax: +46 18 591922
Order Tel: +46 18 565710
Order Fax: +46 18 565705
order@biotage.com
Support Tel: +46 18 56 59 11
Support Fax: +46 18 56 57 11
eu-1-pointsupport@biotage.com

NORTH & LATIN AMERICA

Main Office: +1 704 654 4900
Toll Free: +1 800 446 4752
Fax: +1 704 654 4917
Order Tel: +1 704 654 4900
Order Fax: +1 434 296 8217
ordermailbox@biotage.com
Support Tel: +1 800 446 4752
Outside US: +1 704 654 4900
us-1-pointsupport@biotage.com

JAPAN

Tel: +81 3 5627 3123
Fax: +81 3 5627 3121
jp_order@biotage.com
jp-1-pointsupport@biotage.com

CHINA

Tel: +86 21 68162810
Fax: +86 21 68162829
cn_order@biotage.com
cn-1-pointsupport@biotage.com

KOREA

Tel: +82 31 706 8500
Fax: +82 31 706 8510
korea_info@biotage.com
kr-1-pointsupport@biotage.com

INDIA

Tel: +91 22 4005 3712
india@biotage.com

Distributors in other regions are listed on www.biotage.com

Literature Number: UI392

© 2018 Biotage. All rights reserved. No material may be reproduced or published without the written permission of Biotage. Information in this document is subject to change without notice and does not represent any commitment from Biotage. E&OE. A list of all trademarks owned by Biotage AB is available at www.biotage.com/legal. Other product and company names mentioned herein may be trademarks or registered trademarks and/or service marks of their respective owners, and are used only for explanation and to the owners' benefit, without intent to infringe.